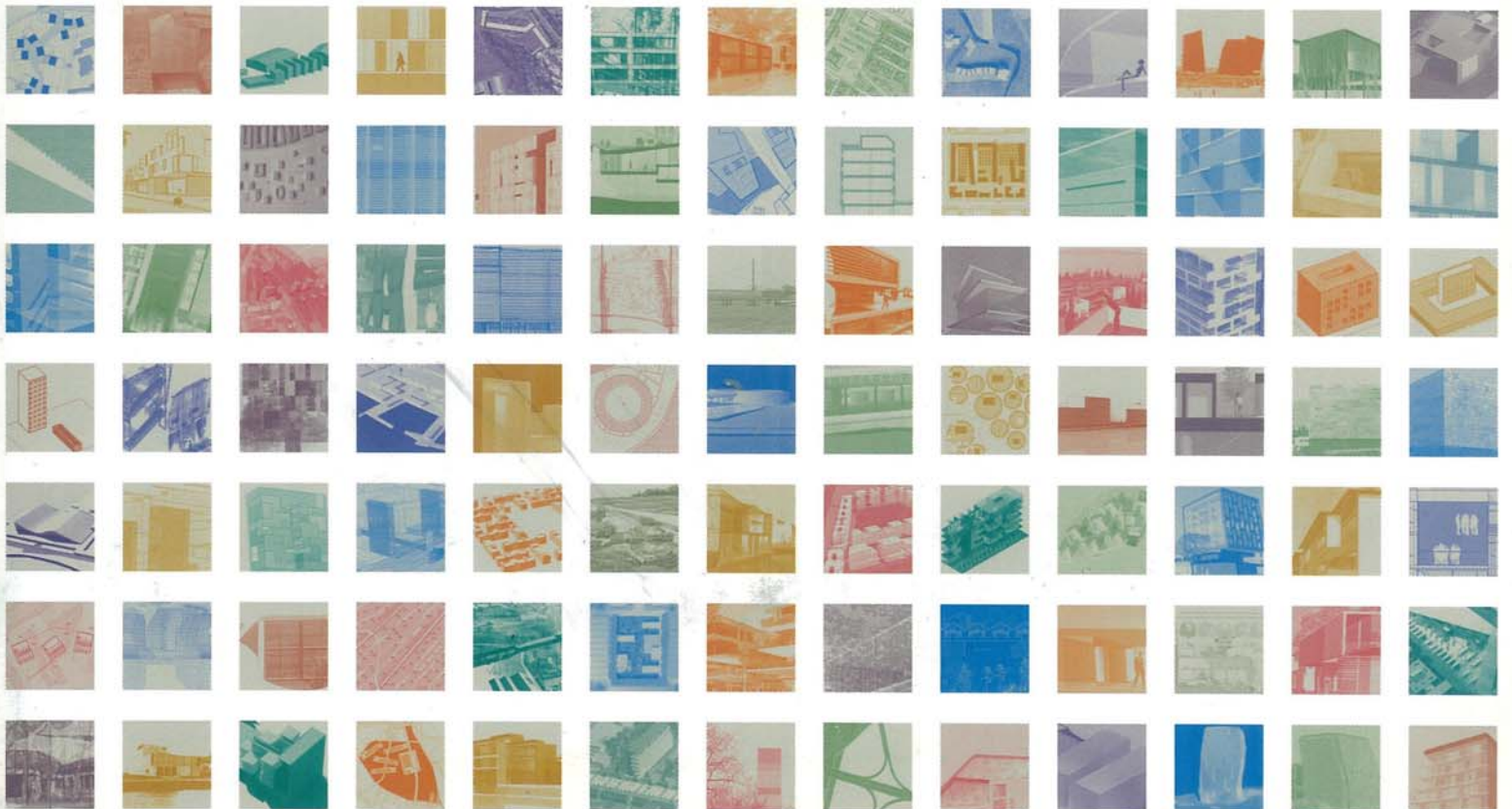




SUB-URBAN CHALLENGE, URBAN INTENSITY AND HOUSING DIVERSITY

EUROPAN 7 EUROPEAN RESULTS



Évora, 120 km to the east of Lisbon, is among the towns on UNESCO's World Heritage list. In addition to its longstanding role as the Alentejo region's leading town, it is now seeking to increase its importance in today's wider European context. Évora has an exceptional collection of urban characteristics, from the historic town centre, its surrounding walls, its suburban districts to the north, and the 20th century town which includes the celebrated Malagueira project by the architect Álvaro Siza Vieira.

The area is to the north east of the town, close to a large development programme known as the "Lions expansion zone". The routing of part of the planned outer ringroad and an access road constitute a pivot between the consolidated

urban fabric to the west and the transition zone to the east which has marked the town's development in recent years.

The land is to have a predominantly residential function, but this is complemented by shopping facilities, cultural activities, employment opportunities, urban service and public spaces, all suitable for present day and future lifestyles. The public to be targeted is young executives. In the sectors surrounding the area, the planning regulations require medium density with a building height of 3 to 4 storeys. Proposals can explore alternatives in order to introduce innovative responses into the urban morphology.

Population
42000

Location
Quinta dos Álamos
Study area
4.1 ha

Site area
1.65 ha

ÉVORA, PORTUGAL

EXPLORING THE URBANISED EDGES





RUNNER-UP

PROFUNDIDADES

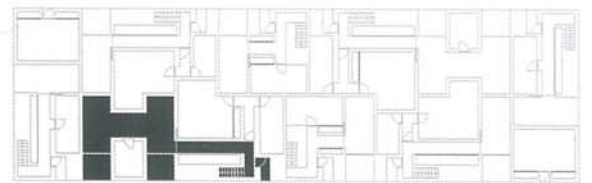
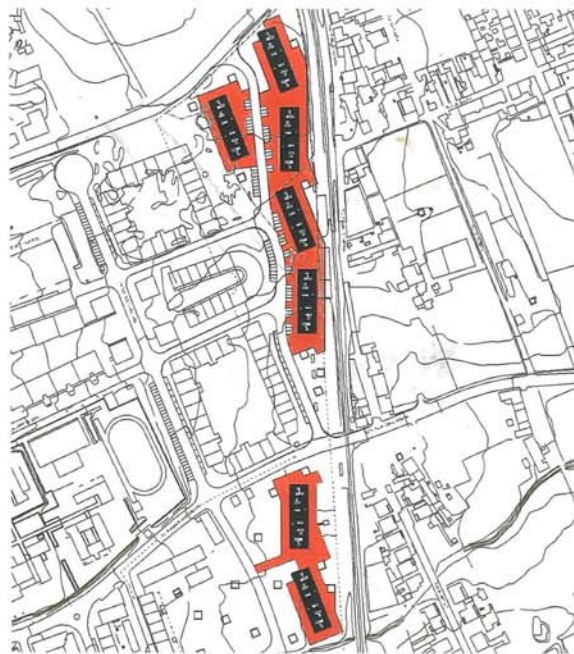
ÉVORA, PORTUGAL

Nuno Guerra (P) architect
 Ricardo Boaventura (P)
 architect
 Duarte Cardoso Ferreira (P)
 architect

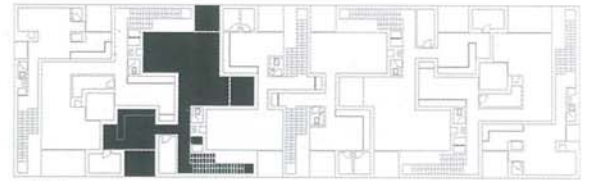
The mass limits and closes (empty) spaces. It creates that passionate energy of constructions in Alentejo as common elements.

It is in the search of mass and the tensions created by it that can be found spatial innovation, a shape resulting from apparent accidental circumstances and sculptural resolutions based on functionality and on nowadays lifestyle. The repercussion of volume is an answer to the needs that give it

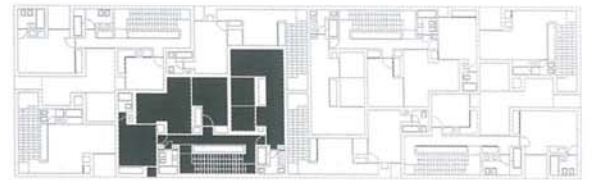
scale, uses and humanity. Houses are designed at a physical and social level in their relation with environment, in the shaping of an inner volume and in their extension to the outside as well in the adjacency of those volumes which design the unity of the building in an honest relationship between street and city.



13 - ground floor



13 - first floor



13 - second floor

